

Home News

Search TRN...

Turner Radio Network RSS Feed

Stats

Content View Hits : 2186622

*** FLASH *** INDICATIONS OF SEVERE EARTHQUAKE / ERUPTION AT YELLOWSTONE NATIONAL PARK

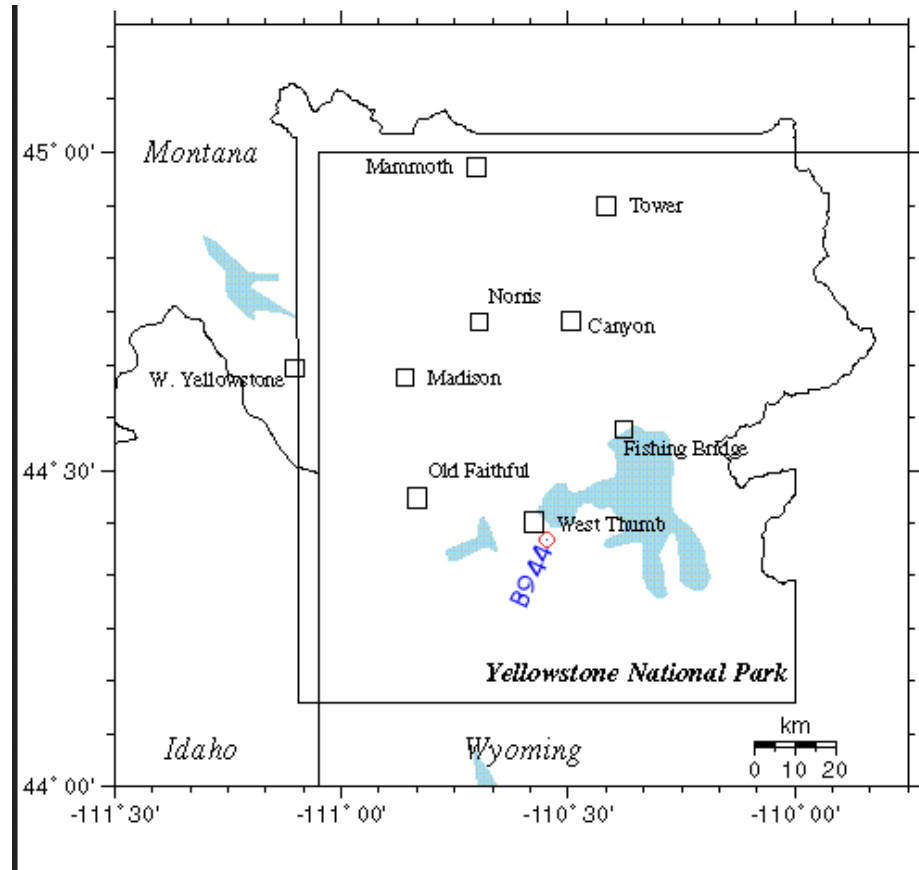
Sunday, 02 February 2014 05:06

February 2, 2014 -- (TRN) -- A seismometer inside a borehole at Yellowstone National Park has begun reporting **staggering** underground activity near the southwest corner of Yellowstone Lake, possibly signaling the beginning of an eruption of the Super Volcano at the Yellowstone National Park. TRN has obtained the image of the Seismograph report and now YOU can see it for yourself! This could be very nasty. . . (UPDATED 2-3-2014 9:00 AM)

Yellowstone lake is pretty much the center of what is the Yellowstone Caldera; the mouth of a massive Super Volcano, located beneath the park.

The activity began around 12:00 Noon, Mountain Standard Time (MST) on February 1, and was detected by a seismometer in Borehole B944 then continued, non-stop, all day yesterday getting worse and worse as the hours wore on. The activity is continuing right now at 6:06 EST AM as this news article is being produced.

The map below shows the location of Borehole B944 in relation to Yellowstone Lake and the rest of the park

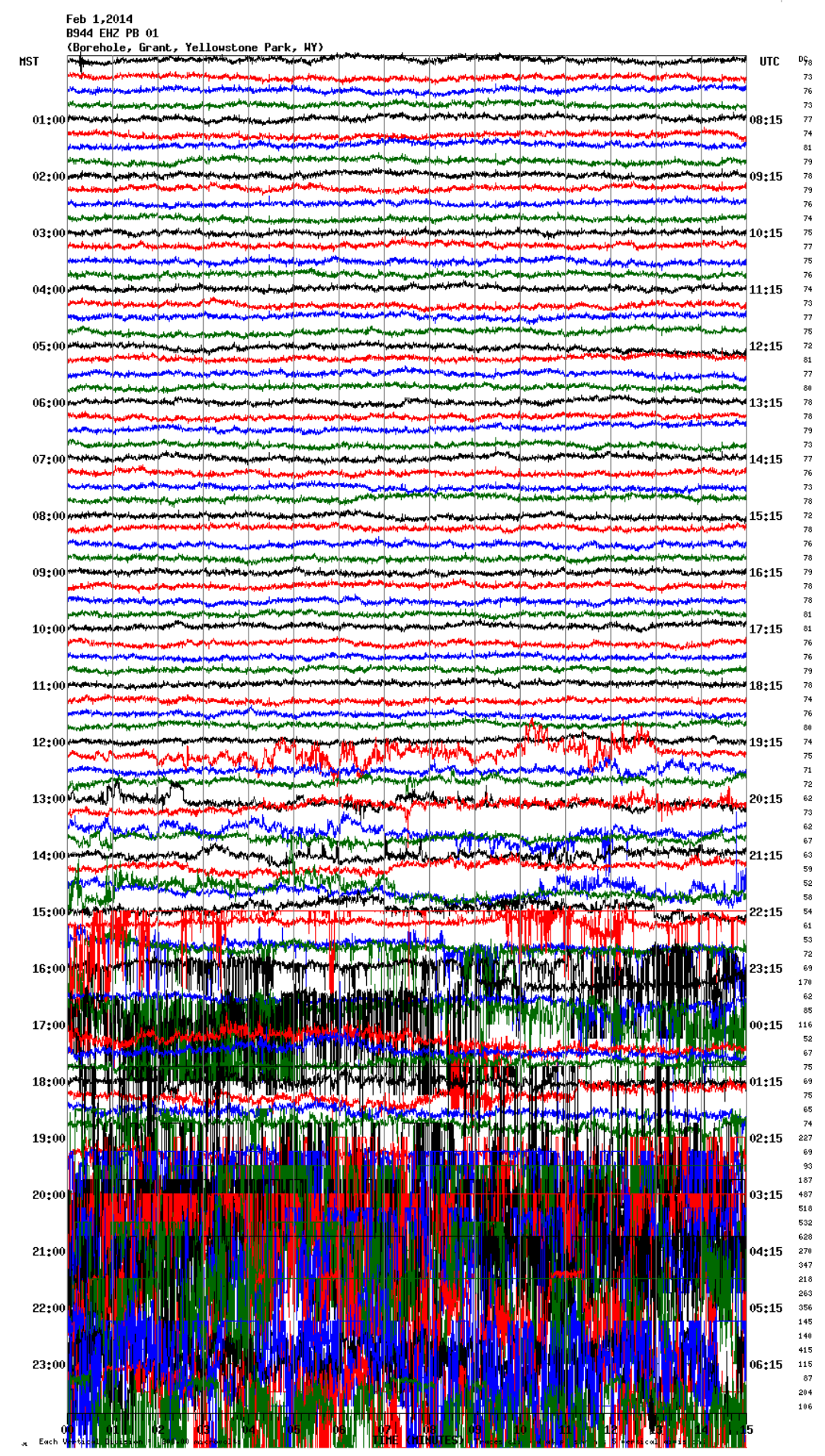


The readings being reported from seismometer inside Bore Hole #B944 are literally **"off-the-scale."** Is an earthquake brewing, or is this the beginning of a catastrophic eruption of the Yellowstone "Super Volcano?"

Seismographic Printout from Yellowstone National Park, Bore Hole #B944, for February 1, 2014. The time stamp goes down the left edge. Look at what starts happening from 12:00 Noon for the rest of the day. By

3:00 PM MST, things get real dicey; by 5:00, it is clear there's real trouble happening underground. By 7:00 PM, the seismographic gear is totally overwhelmed; with all readings going utterly off the scale. This could be a sign that a massive eruption of the Yellowstone Super Volcano has begun deep underground.

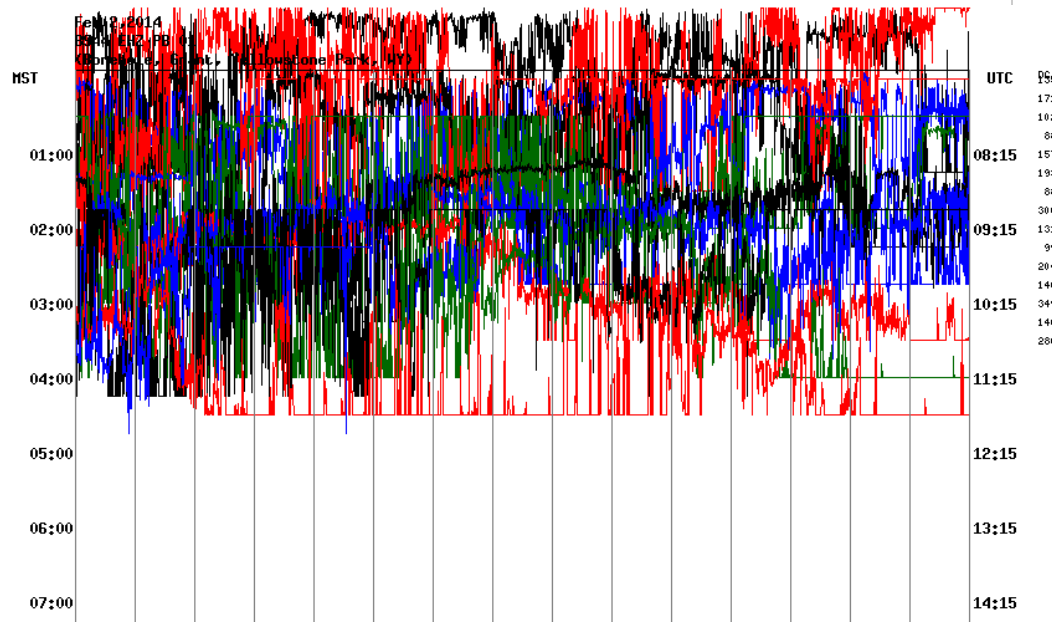
CLICK IMAGE TWICE TO VIEW FULL SIZE



A second printout shows the activity continuing to this very moment, so severely that the seismometer printer is RUNNING OUT OF BLUE, BLACK AND GREEN INK!

Here is the activity from Midnight MST to 4:30 AM, MST (5:30 AM EST)

CLICK IMAGE TWICE TO VIEW FULL SIZE

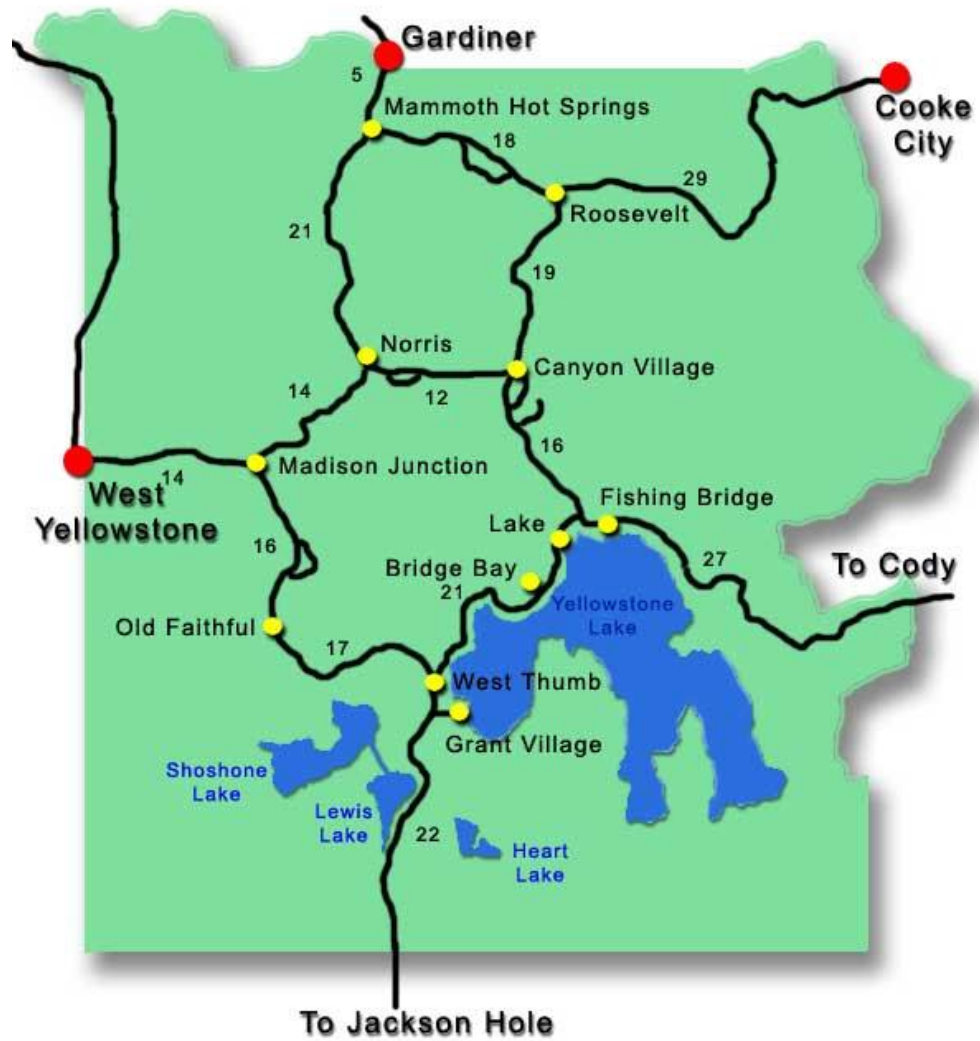


PERSPECTIVE ON THE ENORMITY OF YELLOWSTONE

To help readers understand the implications of what is taking place, we first show the enormity of Yellowstone National "PARK" with stats from the US [National Park Service](#):

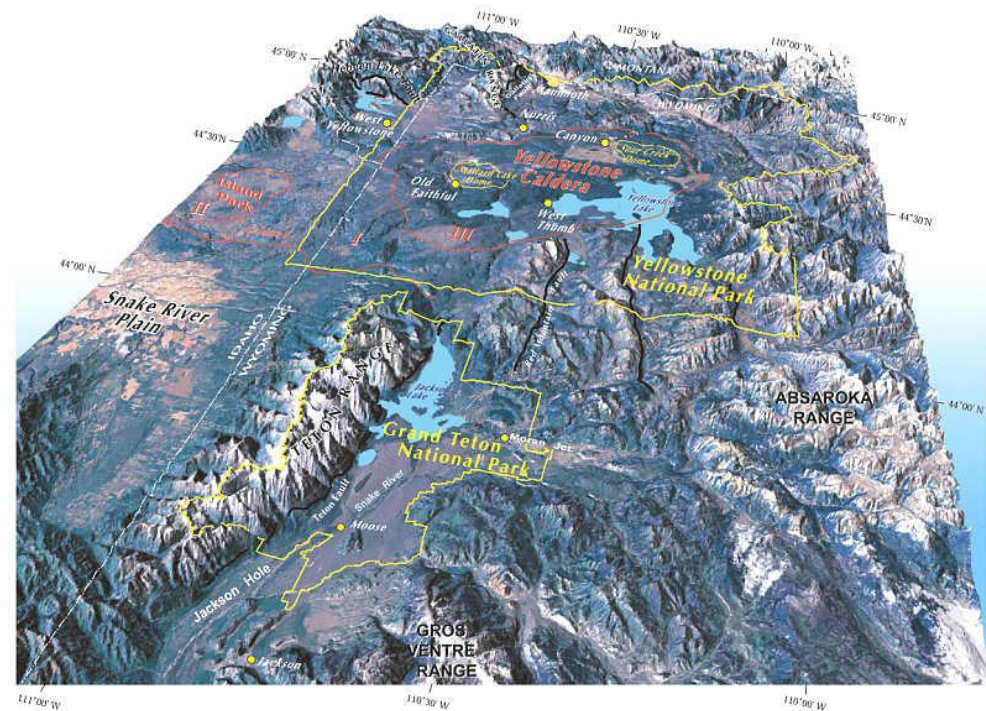
- Yellowstone was the world's first National Park
- A designated World Heritage Site and designated Biosphere Reserve
- 3,472 square miles or 8,987 square km
- 2,221,766 acres or 898,317 hectares
- 63 air miles north to south (102 km)
- 54 air miles east to west 87 km)
- 96 % in Wyoming
- 3 % in Montana
- 1 % in Idaho
- Highest Point: 11,358 ft / 3,462 m (Eagle Peak)
- Lowest Point: 5,282 ft / 1,610 m (Reese Creek)
- **Larger than Rhode Island and Delaware combined**
- **About one-quarter the size of Switzerland and about 65% the size of Montenegro**
- Approximately 5% of park is covered by water; 15% is grassland; and 80% is forest
- Precipitation ranges from 10 inches (26 cm) at the north boundary to 80 inches (205 cm) in the southwest corner
- Temperatures (average) at Mammoth: January: 9° F/-13 C in July: 80° F/27 C
- Records:
 - High: 99°F/37 C, 2002 (Mammoth)
 - Low Temp: -66° F/-54 C (West Entrance, Riverside Station 1933)

Here's a map of Yellowstone:



Map shows **locations**, **mileage**, **towns**, **roads**, and **lakes**.

Here is a Topographical map showing the mouth ("Caldera") of the Super Volcano and the scarred, treacherous terrain, created by past eruptions. (Click Image to enlarge). The park boundaries are the thin Yellow line, the Caldera of the super volcano is shown by the thin Red line. Bear in mind that seismometer B944 is just next to the area labeled 'West Thumb' on the map, showing the western edge of Yellowstone Lake. That puts this seismic activity right smack in the active zone of the actual caldera.



A recent program aired by the British Broadcasting Corporation (BBC) *** THEORIZED *** what an eruption of Yellowstone would affect. Below is the *** THEORETICAL *** blast, damage and volcanic ash fallout area, which is shown in various shades of Orange.

(This image does NOT reflect an ongoing eruption -- it is not real)



If this is the start of an eruption at Yellowstone, the entire northwest quadrant of the country could be affected by damage and disruption beyond human comprehension.

We will monitor this story closely.

UPDATE Feb. 2, 2014 11:26 PM EST

According to the U.S. Geological Survey (USGS) seventeen (17) earthquakes in the area of Yellowstone

preceded this strange seismometer readings. Those minor earthquakes are listed as follows:
17 earthquakes in map area

1.2 10km NW of West Yellowstone, Montana 2014-01-30 22:16:01 UTC-06:00 10.7 km
1.9 45km NNE of Old Faithful Geyser, Wyoming 2014-01-30 18:21:11 UTC-06:00 3.9 km
1.8 45km NNE of Old Faithful Geyser, Wyoming 2014-01-30 16:02:27 UTC-06:00 6.9 km
1.8 44km NNE of Old Faithful Geyser, Wyoming 2014-01-30 12:43:19 UTC-06:00 2.2 km
1.8 45km NNE of Old Faithful Geyser, Wyoming 2014-01-30 10:42:11 UTC-06:00 4.9 km
1.4 44km NNE of Old Faithful Geyser, Wyoming 2014-01-30 05:11:36 UTC-06:00 7.9 km
2.0 45km NNE of Old Faithful Geyser, Wyoming 2014-01-30 05:11:35 UTC-06:00 7.4 km
1.8 46km NNE of Old Faithful Geyser, Wyoming 2014-01-30 04:57:10 UTC-06:00 10.1 km
2.4 45km NNE of Old Faithful Geyser, Wyoming 2014-01-30 02:40:35 UTC-06:00 11.8 km
2.2 18km ESE of Old Faithful Geyser, Wyoming 2014-01-30 00:57:03 UTC-06:00 1.8 km
1.5 17km ESE of Old Faithful Geyser, Wyoming 2014-01-30 00:43:29 UTC-06:00 1.9 km
1.3 18km ESE of Old Faithful Geyser, Wyoming 2014-01-30 00:39:18 UTC-06:00 -0.3 km
1.4 17km ESE of Old Faithful Geyser, Wyoming 2014-01-30 00:33:12 UTC-06:00 2.3 km
1.5 44km NNE of Old Faithful Geyser, Wyoming 2014-01-29 19:29:59 UTC-06:00 4.3 km
2.3 55km ENE of Old Faithful Geyser, Wyoming 2014-01-29 02:11:08 UTC-06:00 -3.4 km
1.5 46km NNE of Old Faithful Geyser, Wyoming 2014-01-28 05:39:47 UTC-06:00 7.3 km
1.4 27km ENE of West Yellowstone, Montana 2014-01-27 20:44:29 UTC-06:00 6.2 km

In addition, as of about 4:00 PM MST today, the activity shown in the seismometers above **has quieted down a lot**. Not completely, but far closer to normal than not. We will continue to monitor the situation. Those of you in the western United States and southwestern Canada would do well to monitor it as well.

SOURCE INFO (Updated 2-3-2014 9:15 AM EST)

A verifiable source for our materials in this story can be found at:

<http://www.isthisthingon.org/Yellowstone/details.php>

The link above provides LIVE access to the Borehole data we reported.

Archives of that Borehole (B944) Data are available for Feb. 1 at:

http://www.isthisthingon.org/Yellowstone/wrapper.php?file=LKWY_SHZ_US_01.2014020100.gif

and for Feb. 2 at:

http://www.isthisthingon.org/Yellowstone/wrapper.php?file=LKWY_SHZ_US_01.2014020200.gif

In addition, LIVE readings from ALL the boreholes are available at:

<http://www.isthisthingon.org/Yellowstone/daythumbs.php>

If you would like to be alerted by e-mail about future news of this type or of RADIATION ALERTS as the radiation from the Fukushima Nuclear Disaster in Japan hits U.S. and Canadian shores, you can subscribe to our "ALERTS" e-mail service, free! This is *NOT* a discussion list; you will *NOT* be deluged with email and your email will *NEVER* be sold or rented to anyone. To sign-up, click **HERE**

[< Prev](#)

[Next >](#)